

# 71 SERIES

GRAYSCALE COPY | PRINT | SCAN SYSTEM



**Optimum  
WorkGroup Performance**

*Experience the most advanced wide format  
technology for technical documents*

# 71G SERIES

## Intelligent Toner Technology

KIP 71 G Series Systems are the leading advanced solutions for technical printing professionals

### 4 D or 6 D per Minute Solutions with 1 or 2 Media Rolls

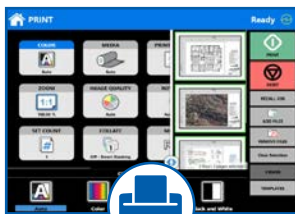
Up to 300% faster printing than inkjet systems with up to 50% cost savings. Perfectly collated sets at 360 prints per hour supported by two roll media capacity for unattended printing with top or rear stacking.

The advanced technologies incorporated into KIP printers set the benchmark for proven quality and performance. This ensures that our printers deliver the highest quality and lowest cost of operation to help your company become more efficient, productive and profitable.

## Intelligent Toner Technology

- 12" True Smart Tablet Function Touchscreen
- Workflow Automation Templates
- Pictorial Operator Guides
- Smart Link QR Code Access to Operator Guides for Smart Phones
- Toner - High Definition Printing Technology
- Permanent Print Heads
- 100% Toner Efficient - no waste
- Large Capacity Toner Cartridges
- Low Cost of Operation
- Highest Image Durability
- Superior Productivity - Fast Consistent Speed Print Production
- Quick Paper Loading Technology
- High Speed File Processing
- Peace of Mind Data Security

## KIP System K Software Suite



### PRINT

- KIP System K Software Suite
- Advanced Browser Based Printing
- Preflight Thumbnail Viewer
- WHQL Windows Driver
- Print from Cloud Services
- Concurrent Print and Scan



### COPY

- Single Touch Copy
- Real-time Image Preview
- Recall Previous Jobs
- Simple Selection Enlarge/Reduce
- Area of Interest Editing
- Concurrent Copy and Scan



### SCAN

- Auto DeSkew
- Image Clean-up
- High Resolution Color Scanning
- Area of Interest Scanning
- Easy File Renaming
- Scan to Cloud Services



### DATA SECURITY

- Image Overwrite - Data Shredding
- Windows IoT - Data Encryption
- Removable Hard Drive
- KIP Accounting & Cost Center
- Virus Scanning
- KIP Secure Print - User PIN



PROVEN  
RELIABILITY  
YOU CAN  
COUNT ON

Brilliantly Compact - Space Saving Design

Highest Build Quality for Long Life Durability

Steel Frame Construction

Outlasts Multiple Fast-plastic Inkjets Printers

KIP System K Software is included

Complimentary Software Upgrades

24/7 Access to Web Based Easy and Informative Software Tutorials

Live Virtual Product Training to Keep Your Team Productive

# TRUE SMART TABLET PRODUCTIVITY

PRINT, COPY & SCAN BRILLIANTLY



True smart tablet function that is easy for new or experienced users

The KIP touchscreen has true smart tablet easy function and offers unmatched productivity with intuitive features to brilliantly automate Print, Copy, and Scan workflow.

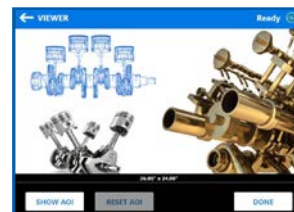
- Maximize efficiency - Copy and print or scan and print at the same time
- Color scan to file with ability to edit line color
- Interrupt large print runs for quick one-off prints or copies
- Preview high definition images in real-time
- KIP's Area of Interest on-screen editing let's you quickly print only the section of information you need
- Auto de-skew technology ensures the perfect scan or copy to enhance quality and workflow
- KIP Cloud Connect let's you print from or scan to cloud services for project collaboration anytime, anywhere
- Job history saves valuable time. No need to return to your desk to effortlessly print recent jobs
- On-screen pictorial user guides keep your team knowledgeable and productive
- Have a question about the KIP print system? Smart Phone and browser access by KIP Smart Link QR Code for quick answers from video shorts and PDF user guides.



Automated Workflow for Single Touch Simplicity



Intuitive Feature Selection



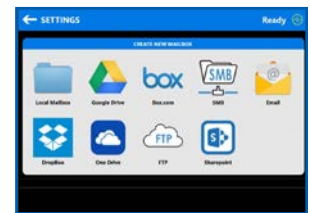
Real-time High Definition Image Preview



Area of Interest Image Editing



Auto De-skew for Copy & Scan



Cloud Connect



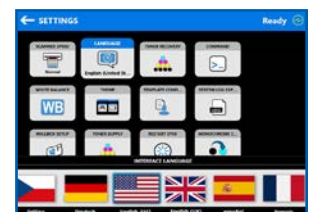
Job History



Pictorial Feature & Operator Guide



KIP Smart Link QR Code Access to Operator Guides for Smart Phones



One-Touch Access to Features in 12 Languages

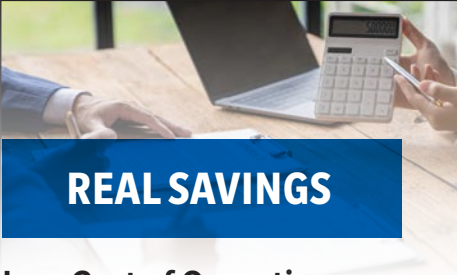
# High Definition Print (HDP) Technology



## KIP HDP Technology redefines print quality standards for technical printing professionals

Monochrome images are printed with advanced grayscale accuracy and fine line image enhancement to satisfy the most exacting quality standards. KIP HDP technology is 100% toner efficient - no waste toner. KIP HDP reduces the cost of printing, saves significant money, and delivers industry leading low cost of ownership making KIP the preferred choice for technical professionals.

KIP HDP toner technology is consistent over time maximizing print quality and reliability. KIP print systems do not use imaging carriers or developers that deteriorate over time and cause poor print quality. Developers and carriers add maintenance cost and impact landfills.



## 600 x 2400 dpi - High Resolution

Print quality to perfect every detail. KIP systems feature high resolution 600 x 2400 dpi printing for sharper details with distinctive grayscale gradients and halftones. KIP HDP image smoothing technology enhances curves, diagonal lines, and arcs by smoothing line edges with excellent precision.

## Low Cost of Operation

- Saves up to 50% over legacy systems
- 100% toner efficient - no waste
- No use of costly developers or carriers
- High capacity low cost toner cartridges vs expensive ink cartridges that expire
- KIP's permanent print head technology vs expensive ink jet print heads that routinely require replacement due to expiration or dry up
- No need for expensive specialty coated media to produce quality output. The KIP 71 Series produces quality output on lower cost uncoated media.
- KIP systems have higher build quality, outlasting multiple inkjet systems over time.

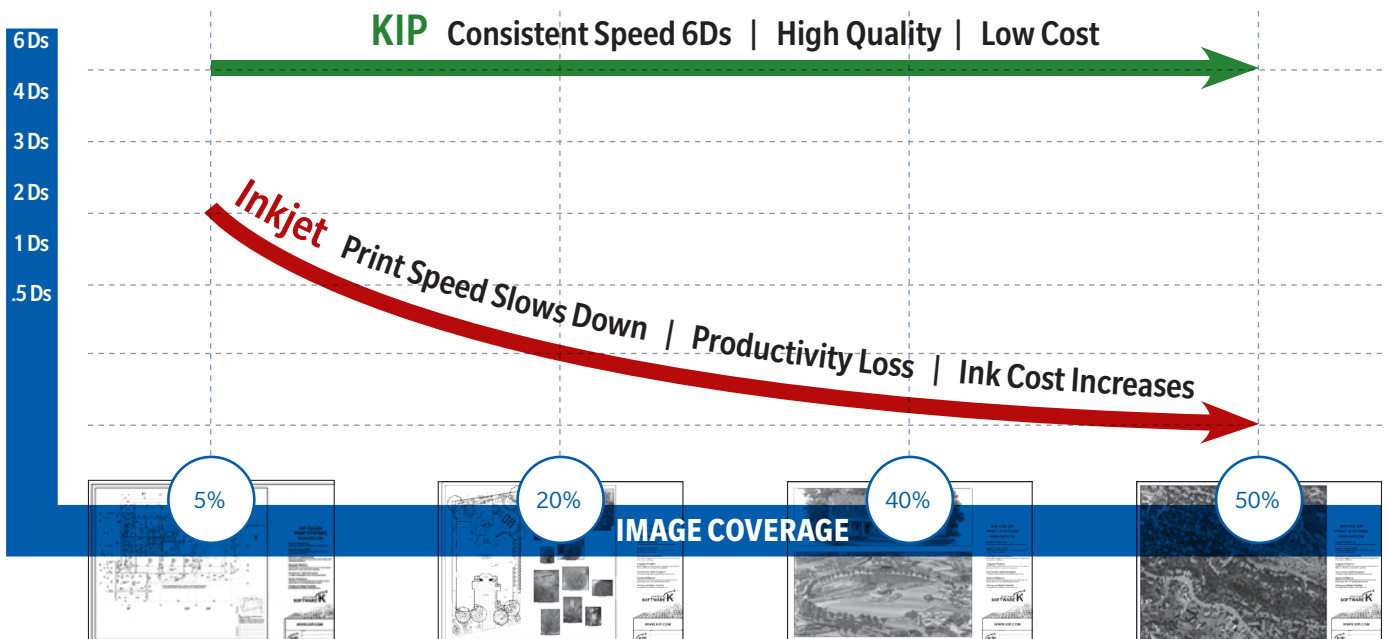
# Superior Productivity

## CONSISTENT SPEED TECHNOLOGY

KIP 71 G Series systems deliver consistent print speeds at 240 or 360 prints per hour always at the highest quality regardless of image coverage or print length. Confidently print unattended sets within compressed project timelines so you can focus on more important priorities. No slow file spooling at your pc. Experience ultra fast file conversion and multitasking productivity from the KIP 71 G Series Windows IoT controller with Quad Core Processors and Solid State Hard Drives.

*KIP is 2 to 20 times faster printing across all Print Quality Settings  
KIP systems always print at the highest quality with lower cost*

## PRINT SPEED 24" X 36"



## SPACE SAVING PERFORMANCE

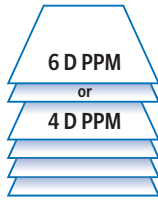
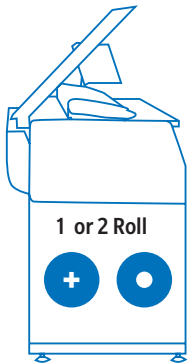


Fits where you need it, including near wall installation

# Highest Image Durability

KIP systems deliver solid blacks, smooth grayscale and uniform print quality from the first to the last page of the print job.

- Instantly dry
- Highlighter safe
- Waterproof
- Smear-proof
- Lightfast outdoor fade resistant

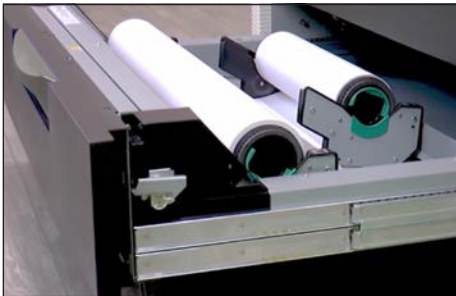


## 71 G SERIES RANGE OF PRODUCTIVITY & CONFIGURATIONS

Rolls	Speed	CONFIGURATION
1 Roll	4 D or 6D	MFP
2 Rolls	4 D or 6D	MFP

4 D PPM | 240 High Quality Prints per Hour

6 D PPM | 360 High Quality Prints per Hour



### Media Capacity

Simple and fast paper loading in less than one minute versus up to several minutes on automated inkjet systems. KIP systems feature a user friendly "End-Cap" design for easy loading of media rolls. Media drawers are auto-switching to ensure non-stop print production, full job recovery, and feature maximum media versatility. Media status is displayed on the smart touchscreen and within the KIP System K software suite so out of paper surprises are not a part of your busy day.



### Top & Rear Stacking

Top stacking up to 100 prints.

Optional KIP 1200 professional grade rear stacker system holds up to 1,000 perfectly collated prints.



KIP 1200



### The Color of KIP is Green

- Environmental aspects that make a difference
- Earth conscious. KIP G Series systems are 100% toner efficient, and do not use carriers or developer that impact landfills.
- Save energy - KIP 71 G Series turn on and off and are ready to work based on your schedule
- Energy saving sleeps modes can be based on clock or calendar - no need to leave the machine on 24/7
- Recycle KIP toner bottles in standard recycling bins
- Permanent print heads that do not dry out, clog or need to be thrown away

# KIP System K Software

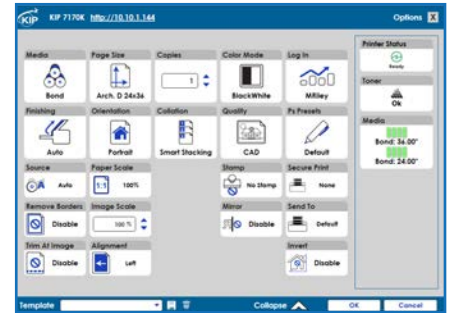
KIP System K Software Suite offers unmatched flexibility for printing projects.

The KIP System K Software Suite provides a uniform user interface whether you are scanning at the Touchscreen or printing from your computer.



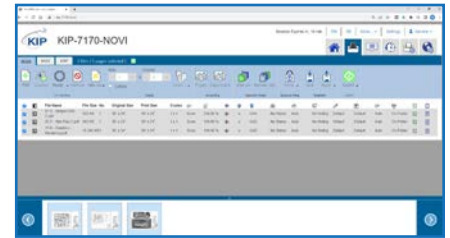
## KIP Windows Driver - Quick with Best in Class Driver Feature Set

- Microsoft WHQL Certified
- 32 and 64 bit operating systems
- Windows 10/11
- Use from a variety of Windows based programs including Adobe, Office and CAD Applications
- Single Source Installation - No need to install multiple drivers
- Workflow Automation Templates
- Real-time Printer Status
- Easily view and manage Job Queue and Job History



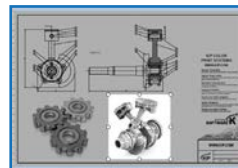
## PrintPro.net - Fast with Best in Class Browser Feature Set

- Driverless Browser Printing
- Browser based print job submission tool. No application or installation required
- Supports Windows, Unix, and MAC OS browsers
- Excellent method for MAC OS users to have full control over printing parameters
- Remote printer administration and queue management

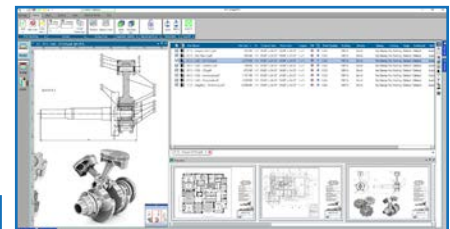


## KIP ImagePro - Max Productivity with Best in Class Features

- Driverless PC App Printing
- High Definition Image Viewer with thumbnail preflight view
- Workflow Automation Templates
- Easily combine single or multi-page files from one or more file locations into a collate set - drag/drop and cut/paste to reorder
- Realtime access to manage print queue to maximize job priority with live printer status
- Control image scaling by percentage or single click automation to preferred page size
- Unlimited Site License - no servers or licensing required



Area of Interest (AOI)



HD Viewer

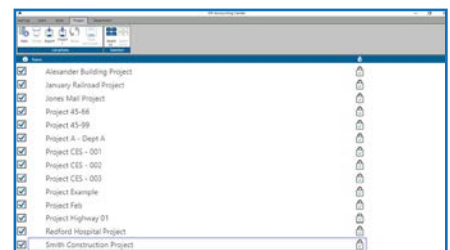


Pre Flight Thumbnail Viewer

## KIP Accounting and Cost Center (Optional)

Track projects and printing costs. KIP Accounting allocates print and copy volumes to departments and projects. Easily, print or email visually attractive reports for copy, print and scan production directly from the application.

- Enhance print system access and security
- Track Copy/Scan/Printing
- Control user features including queue management (plus many more)
- LDAP import of user information



## Stay Productive, Lower Cost and Stress

Performance Category	Superior KIP Workgroup Solutions	Leading Inkjet Systems
Spooling	Fast file processing at KIP controller	Slow spooling that ties up desktop pc
Work Group Printing	Roll switching between media sizes (DCDC), 360 prints/hour Jobs simultaneously sent - sets are perfectly collated	Roll switching between media sizes (DCDC), 35 prints/hour Jobs simultaneously sent - set pages from different jobs combined
B/W Printing	Uses only black toner - no waste, lower cost	15 - 25% of a BW print is color ink, ink waste and higher cost
Supplies	High capacity, long lasting toner cartridges	Lower capacity ink cartridges that dry up and expire by date
Print Queue	Manage at PC, browser or touchscreen	Each page is managed at the printer via a small touchscreen
Job Recovery	Out of paper or jam, automatically reprints - full job recovery	Out of paper or jam, lost pages and rebooting of system
High Priority Jobs	Pause the KIP print queue to print high priority jobs	Feature not available
Media Installation	Easy < 1 minute, install paper and go	Challenging - several minutes, must wait at printer for "ok"
Media Savings	High density images on standard lower cost uncoated media	High density images require higher cost coated inkjet media
Image Durability	Highest - instantly dry, waterproof, highlighter safe, sun resistant	Low, damp, dry-time, ink smears, fades in the sun
Print Heads	Permanent - no replacement required, lower cost	Replacement required, dry up and higher cost
Build Quality	Higher - Rigid Steel Frame Construction	Lower - Light Metal Frame Design



**WORK GROUP  
SUPPORT**

*KIP CONTINUES TO SET THE BENCHMARK FOR PRODUCT SUPPORT AND CUSTOMER CARE EXCELLENCE*

## Schedule live instructor led virtual operator training from KIP product specialists for current and new employees

- Smart tablet style touchscreen operation
- Print system reliability you can count on
- Touchscreen access to color pictorial how to use feature guides
- QR code access to pictorial and video how to use feature guide
- Touchscreen communicates in 12 languages, linked to User login
- Simple media end cap design that is easy for all operators to change media plus accessible touchscreen user guides
- Anywhere, anytime remote access for employees that work from home or from the project site
- Cloud based scanning and printing for global project collaboration
- Control queue management, and reprint from job history without leaving your PC
- KIP print system status for anytime, anywhere system monitoring
- Easily adjust the machine's warm and cold sleep timers, or set your preferred wake and sleep time using event timers
- Easy scanned file renaming for document management system
- Stay on budget - KIP Accounting and Cost Center reporting for project tracking and security
- KIP System K Software Suite offers unmatched productivity for printing projects

**KIP CUSTOMER CARE CENTER - KC3@KIP.COM**

# 71 G SERIES SPECIFICATIONS



## General

Description	Monochrome wide format print/copy/scan with color scanner
Type	Electrophotography (LED) with organic photoconductor (OPC) and closed toner system
Range of Productivity	6 D or 4 D per minute / 360 or 240 prints per hour
Warm Up Time (from cold)	Less than 2 minutes from standby
Configuration	MFP
Roll Options	2 Roll or 1 Roll
Output Delivery	Top / Optional Rear
Dimensions	63" (w) x 28" (d) x 59" (h) / 1590 mm x 700 mm x 1510 mm
Weight	538 lb. / 244 kg
Electrical Requirements	120V plus/minus 10%, 50/60Hz, 12A
Power Consumption (Standby)	500W
Power Consumption (Printing)	1,100W
Power Consumption (Sleep)	<8W

## Printer

Print Resolution	600 dpi x 2400 dpi
Roll Capacity	2 Roll or 1 Roll
Output Sizes Width	11" - 36"
Output Sizes Length	20' / 6 m (standard), 500'/150 m based on media validation
Media Types	Bond 18-24 lb., Vellum/Translucent Bond 18-20 lb., Film 3.5 - 4 mil

## Controller

Controller Type	KIP System K Controller with Microsoft® IoT Enterprise
Memory	2GB DDR3 Standard - Upgradeable to 4 GB
SSD	Minimum 250 GB - Unlimited Upgrade
Supported File Type	DWF, PDF, PDF-A, HPGL 1/2, HP-RTL, Calcomp 906/907, CALS Group 4, TIFF Group 4, CIT/TG4, Grayscale TIFF, TIFF Packbits, PNG, JPEG

## Scanner

Scanner Type	CIS
Scan Resolution	600 dpi
Scan Format	TIFF, Multipage TIFF, PDF, PDF-A, Multipage PDF, DWF, JPEG
Scan Destination	Local USB (removable media), Mailboxes (local), SMB, Cloud
Original Size Width	11" - 36" / 210 mm to 914 mm
Original Thickness	0.05 mm - 1.60 mm (image quality over 0.25 mm not guaranteed)



Scan to watch videos & get more KIP 71 G Series info  
or visit: [www.KIP.com/71](http://www.KIP.com/71)

